

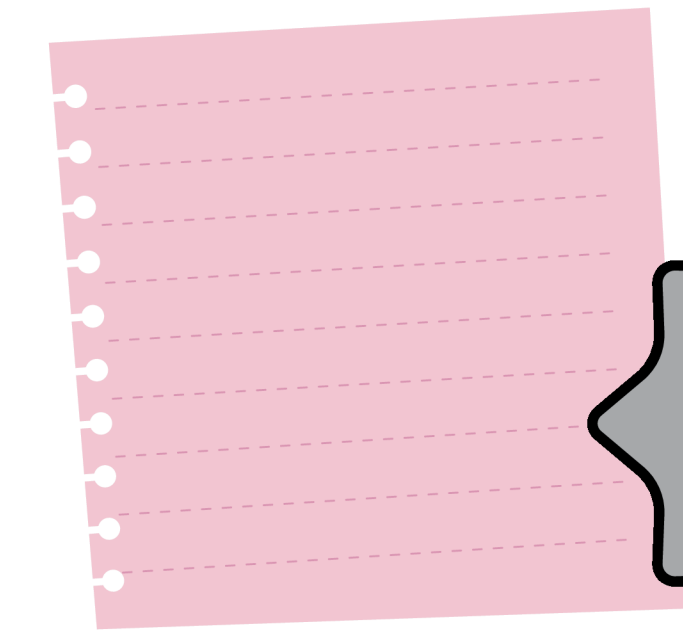
# YEAR 8 SCIENCE ECOLOGY

## Key Stage 2 Science

- Explain the order of organisms in a given food chain, using ideas about producers, consumers, predators and prey.
- Identify abiotic and biotic components of an ecosystem.
- Recognise that there are different environmental conditions in different ecosystems, and this affects what lives there.

## From Year 7 WILD ABOUT LAWNSWOOD

- Sampling techniques



## Working scientifically

- WS 1.5 Evaluate risks both in practical science and the wider societal context, including perception of risk in relation to data and consequences.
- WS 2.5 Recognise when to apply a knowledge of sampling techniques to ensure any samples collected are representative.



Threats to biodiversity

Biodiversity

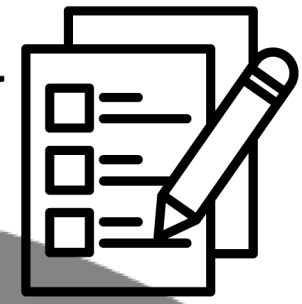
Niches



PRIOR LEARNING



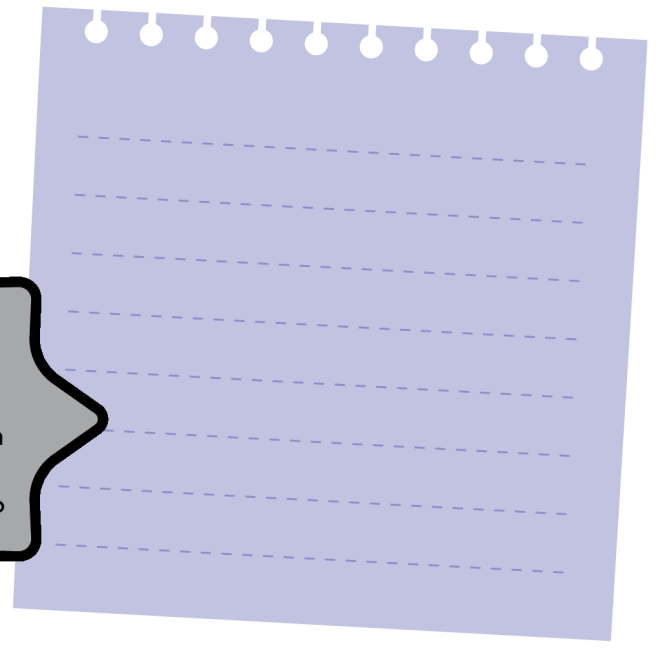
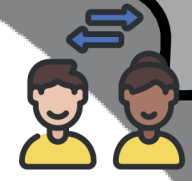
PRE ASSESSMENT



Consolidate prior learning

PEER ASSESSMENT

How well can I explain what affects the living things in an ecosystem?



Transferring biomass through food chains and webs



Predicting population changes



Estimating population size



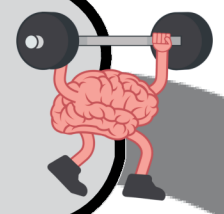
Bioaccumulation



Interdependence; producers, pollinators and decomposers



KNOWLEDGE ASSESSMENT 2



END OF TOPIC ASSESSMENT



LATER LEARNING

## Key Stage 4 Biology

- Communities
- Cycling resources
- Human interaction on ecosystems
- Biomass
- Sustainability

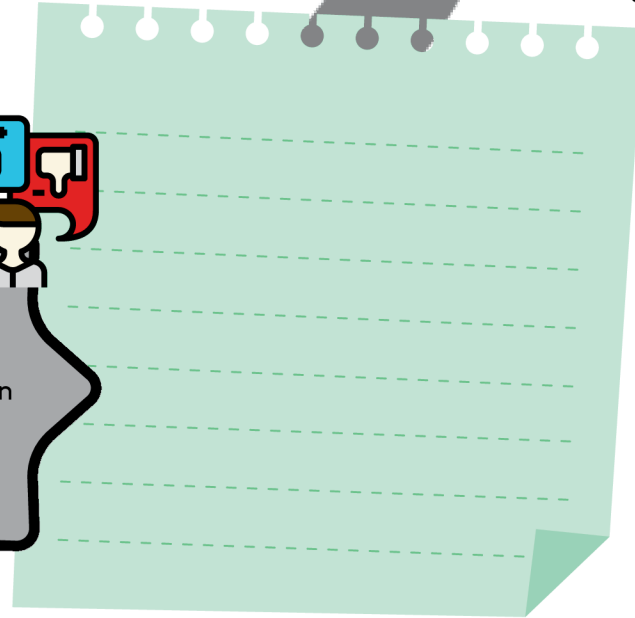


KNOWLEDGE ASSESSMENT 1



SELF ASSESSMENT

How well can I explain how populations of organisms interact with each other?



LAWNSWOOD SCHOOL