

YEAR 7 SCIENCE CELLS

Key Stage 2 Science

- Explain what is meant by movement, growth, nutrition, excretion, respiration, reproduction and sensitivity (the characteristics of living organisms).
- Explain that living organisms may not show all of the characteristic processes of life in an obvious way, or all of the time.
- Justify the classification of examples as living, dead or never been alive, using the characteristic processes of living organisms.
- Recall that multicellular organisms have different parts with different functions.

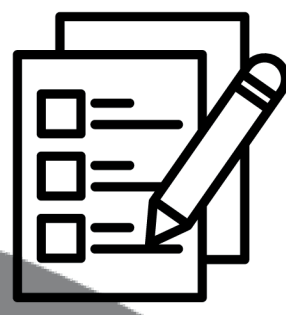
Working scientifically

- WS 1.2 Use a variety of models such as representational, spatial, [...] to develop scientific explanations and understanding of familiar and unfamiliar facts.
- WS 3.1 Presenting observations and other data using appropriate methods.

PRIOR LEARNING



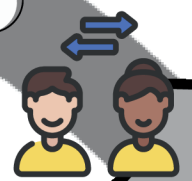
PRE ASSESSMENT



Consolidate prior learning

PEER ASSESSMENT

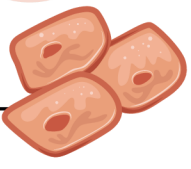
How well can I identify things as living, dead or never alive?



Using light microscopes and recording observations.



Organelles and their function



Modelling cell structures



END OF TOPIC ASSESSMENT



- Key Stage 3 topics
- REPRODUCTION
 - HEALTHY BODIES
 - BIOENERGETICS
 - GENETICS & EVOLUTION

LATER LEARNING

SELF ASSESSMENT

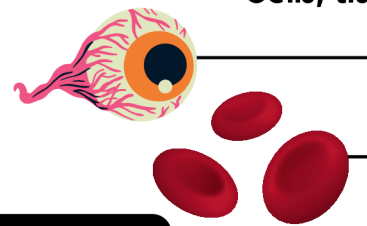
How well can I identify structures in animal and plant cells and explain their function?



KNOWLEDGE ASSESSMENT 1



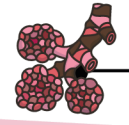
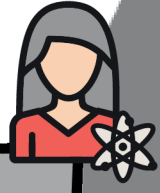
Specialised cells



Cells, tissues, organs and organ systems

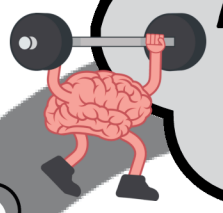
TEACHER ASSESSMENT

How well can I describe what makes up an organism?



Diffusion across the cell membrane

KNOWLEDGE ASSESSMENT 2



LAWNSWOOD SCHOOL