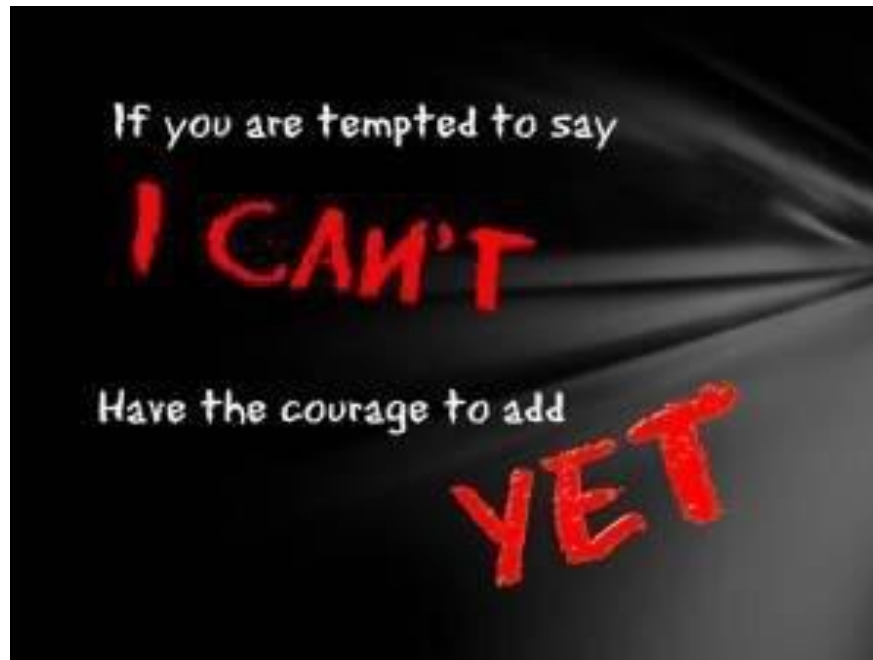




LAWNSWOOD
— SCHOOL —

Embed confidence; fuel ambition.

The power of **'YET'**



Effective Revision Strategies

Name: _____ Tutor group: _____



Top Tips for Successful Revision

Revising **isn't** something that should be **challenging** or **difficult** at all. What revising is, unfortunately, is time consuming. **It takes a while.** That's why you might like to **start early** (nothing to do on a Sunday?)....

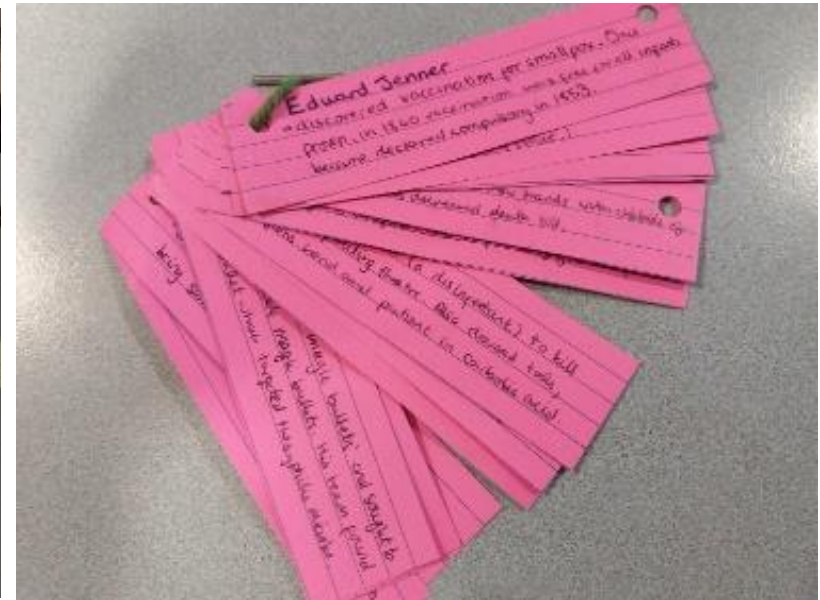
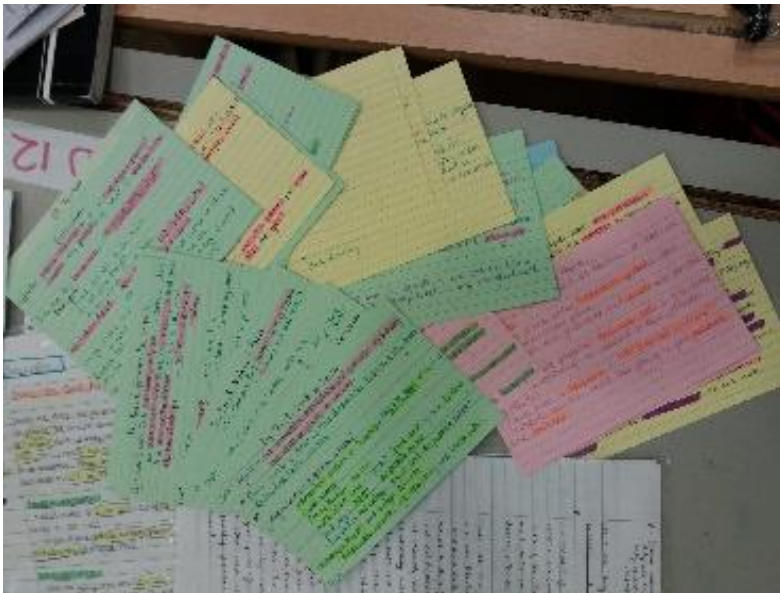
This booklet aims to outline specific examples of best practice in revision to support you to achieve outstanding grades in exams.

What's ineffective?

- Reading and re-reading – builds comfort, but doesn't embed in long-term memory
- Writing notes without purpose
- Indiscriminate highlighting
- Social media at the same time

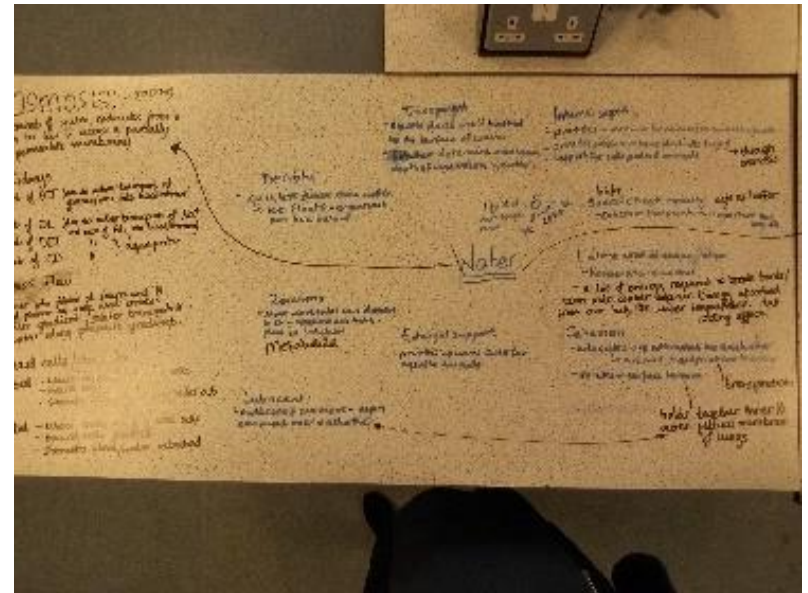
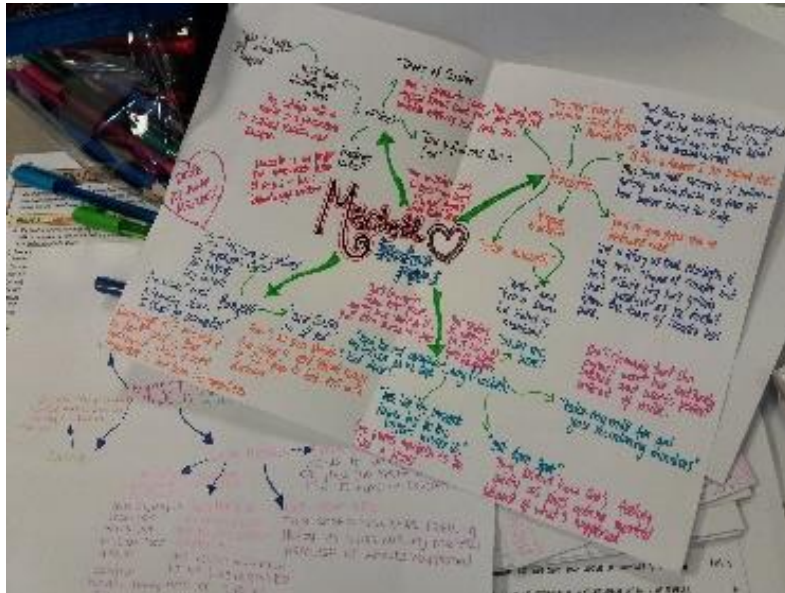


Effective Revision Strategies_1



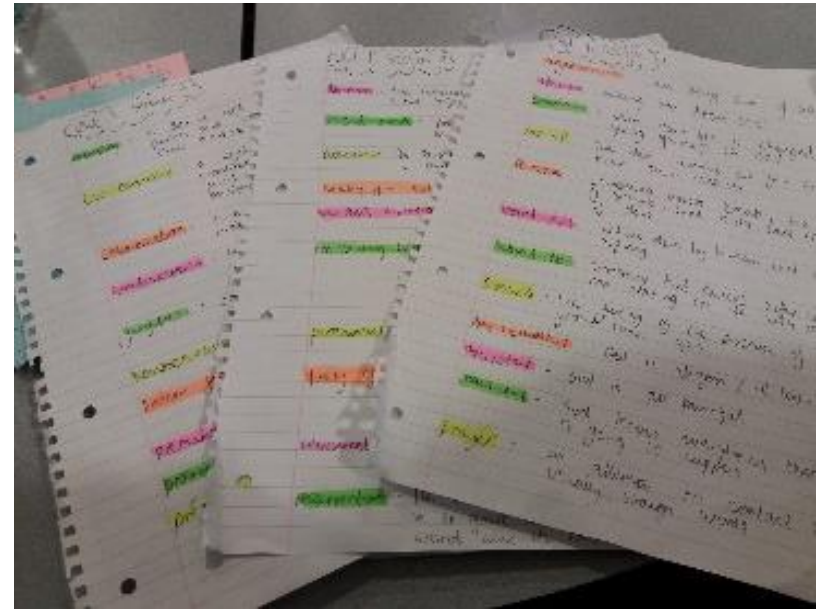
Flashcards

Effective Revision Strategies_1



Mindmaps

Effective Revision Strategies_1

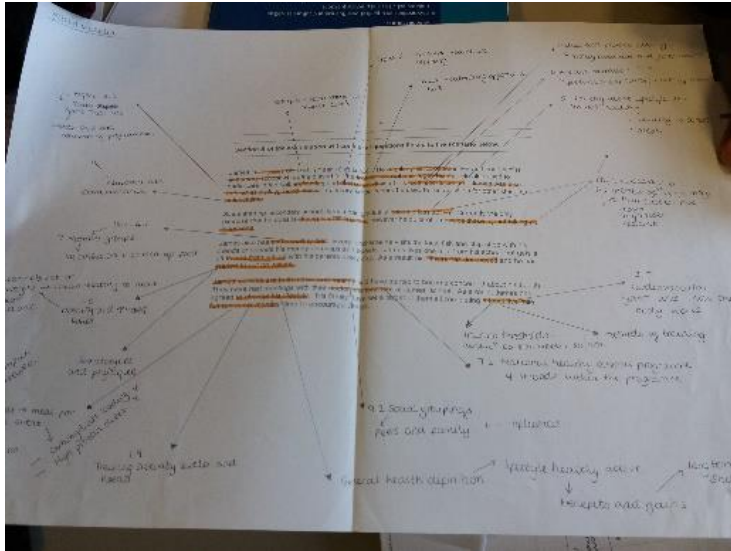


Revision notes & Glossaries

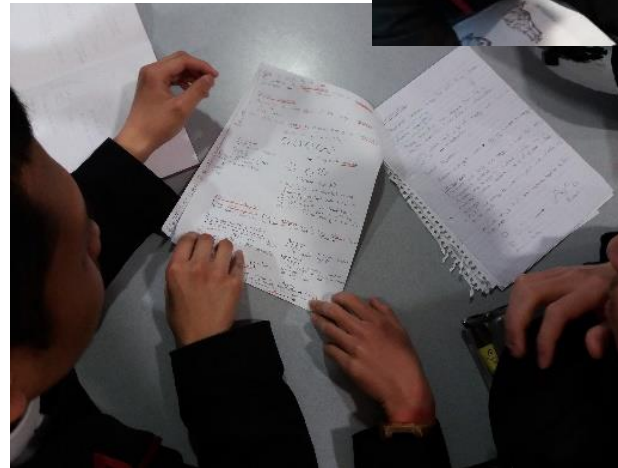
Revision shop

- Open Monday and Thursday break time
- Essential school supplies
- Revision resources

Effective Revision Strategies_2



Annotation

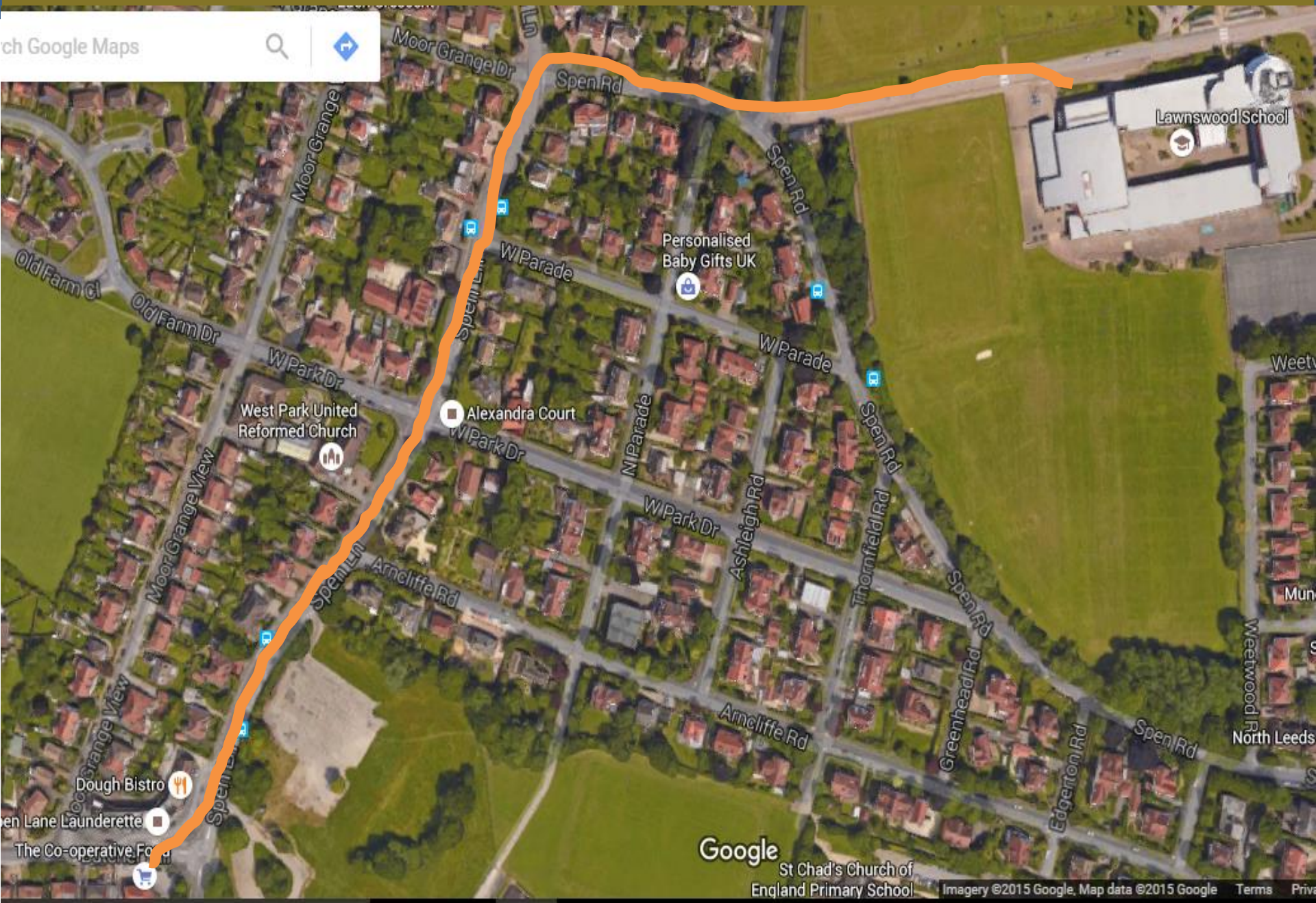


**Study
Buddies**

Remember this

- Blood glucose concentration is monitored and controlled by the pancreas.
- If the blood glucose concentration is too high, the pancreas produces the hormone insulin that causes glucose to move from the blood into the cells. In liver and muscle cells excess glucose is converted to glycogen for storage.
- Students should be able to explain how insulin controls blood glucose (sugar) levels in the body.
- Type 1 diabetes is a disorder in which the pancreas fails to produce sufficient insulin. It is characterised by uncontrolled high blood glucose levels and is normally treated with insulin injections.

Using Loci: Choose a route you often use



Search Google Maps



Lawnswood School

Personalised Baby Gifts UK

Alexandra Court

Google
St Chad's Church of England Primary School

What can you do to help?



**THANK
YOU
FOR
YOUR
SUPPORT**